

B1 INSTALLATION DRAWING

IF THIS DOCUMENT IS PRINTED IN HARDCOPY, IT IS FOR INFORMATION USE ONLY AND THEREFORE IS NOT SUBJECT TO UPDATING CONTROLS. ALWAYS REFER TO SOLIDWORKS VIEWER FOR LATEST ISSUE



FIRST ANGLE PROJECTION

THIS DRAWING IS CONFIDENTIAL AND IS SUPPLIED ON THE EXPRESS CONDITION THAT IT SHALL NOT BE LOANED OR COPIED OR DISCLOSED TO ANY OTHER PERSON OR USED FOR ANY OTHER PURPOSE WITHOUT THE WRITTEN CONSENT OF AP RACING LTD.



AP Racing
Wheler Road
Coventry
CV3 4LB
Tel: +44 024 7663 9595
Fax: +44 024 7663 9559
e-mail: sales@apracing.co.uk
Web site: HTTP://www.apracing.com

Issue No.	Alterations		
	Date & No.	Particulars	Zone / Initials
1	SEPT '15 B7306	FIRST ISSUE	JT
2	9 SEPT '15 B7306	THERMOSENSOR DETAILS ADDED MAX BELL DIA NOTE ADDED	14B 12K JT
3	28 SEPT '15 B7306	-4/6 VARIANT ADDED, VARIABLES DIMN L & PL ADDED.	4K 17M JT
4	13 JAN '16 B7306_07	SHTZ: PAD ADJUSTMENT ROD (ITEM 11) WAS CP6278-107 TUBE	2K JT

SCALE 1:1	SHEET 1 OF 2
DRAWN	Jon Tait
APPROVED	
DERIVED FROM	#
TITLE	
4-PISTON MONOBLOC	
GT REAR CALIPER	
DRG NO.	CP6278-1CD

GENERAL DESCRIPTION

A FOUR PISTON, DIFFERENTIAL BORE CALIPER DESIGNED TO OPERATE ON A VENTILATED IRON DISC OF Ø355x32 WIDE, OR A Ø355x35 CARBON DISC.

CALIPERS ARE SUPPLIED WITH PISTONS TO SUIT A 25.0 THICK PAD.

THE CALIPER HAS SEALS IN THE MOUTH OF THE BORE.

THE CALIPER CAN ACCOMMODATE AN LVDT, WHICH DETECT THE MOVEMENT OF AN INBOARD PISTON & SO GIVE A MEASURE OF FRICTION MATERIAL WEAR.

INSULATING CAPS CAN BE FITTED WHEN USED WITH A 32mm DISC - SUFFIX 'C' (REPLACING 'P') ON PART NUMBER WILL SPECIFY CAPS AS BUILT.

SEE SHEET TWO FOR DETAILS OF PART NUMBERS OF CAPS AND LVDT.

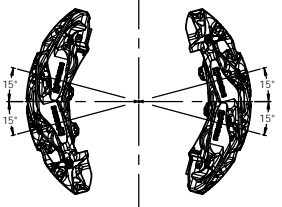
APPLICATION - GT REAR CALIPER.

TECHNICAL & INSTALLATION DATA

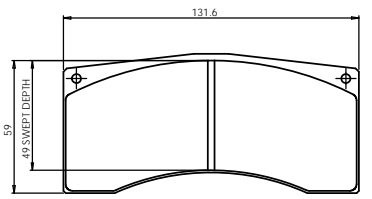
TOTAL PISTON AREA (4) - 33.2 cm²
 PISTON MATERIAL - TITANIUM ALLOY
 BODY MATERIAL - ALUMINIUM ALLOY
 HYDRAULIC PORT THREADS - M10x1
 CALIPER WEIGHT LESS PADS - 1900g (EST.)
 THE INCLUSION OF PAD WEAR INDICATORS ADDS APPROX. 25g.

ASSEMBLY No.		CALIPER HANDING	PL' DIMN	L' DIMN
CP6278-2"	RHT	RIGHT HAND BEHIND AXLE (AS DRAWN)	64.5	39.7
CP6278-3"	LHT	LEFT HAND BEHIND AXLE	64.5	39.7
CP6278-4"	RHT	RIGHT HAND BEHIND AXLE	63.5	38.7
CP6278-5"	LHT	LEFT HAND BEHIND AXLE	63.5	38.7

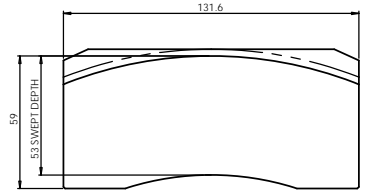
EXAMPLE PART # - CP6278-2S (SIDE FEED) 7 (7lb AKB SPRING) M (TITANIUM PISTONS)
 P (PROVISION FOR PISTON CAPS)



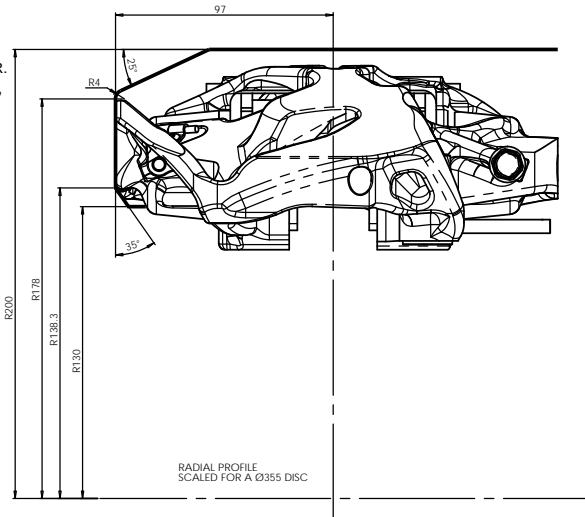
FOR OPTIMUM BLEED, THE CALIPER SHOULD BE INSTALLED IN THE LEADING OR TRAILING POSITION, BETWEEN THE ANGLES SHOWN.



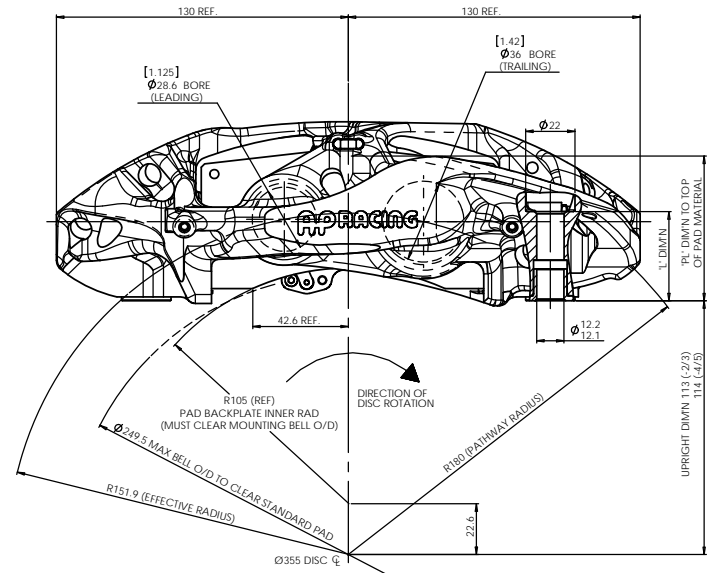
CP6070D49 FAMILY IRON PAD
 AREA: 61.6cm²
 THICKNESS: 25mm



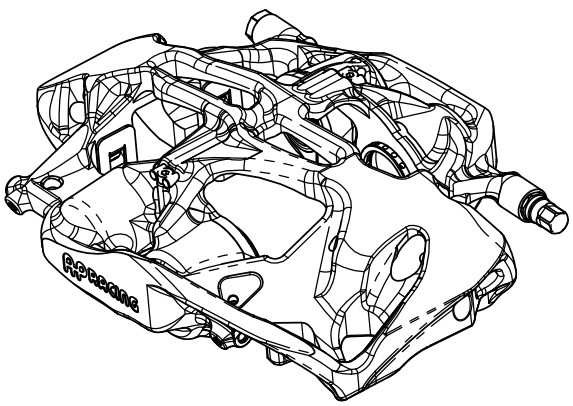
CP6070-108## CARBON/CARBON PAD
 AREA: 69.1cm²
 THICKNESS: 25mm



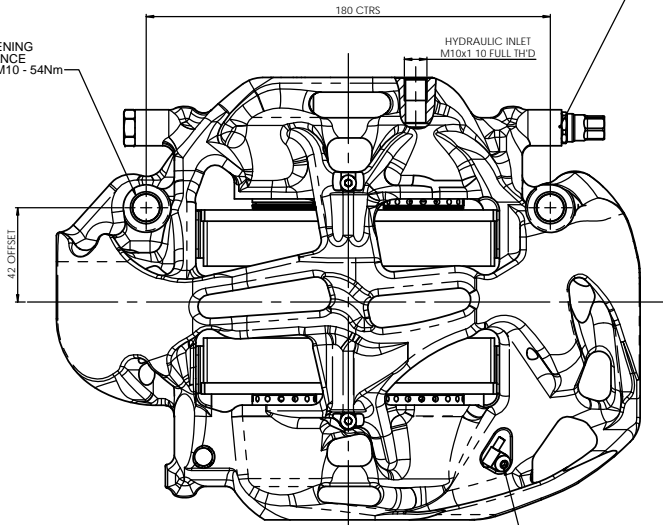
RADIAL PROFILE SCALED FOR A Ø355 DISC



DRY BREAK TO BE USED IN CONJUNCTION WITH CP6300-7 BLEED SYSTEM FITTING. FOR FURTHER DRY BREAK INFORMATION & SPARES REFER TO CP6300-13CD INSTALLATION DRAWING.



TYPICAL MTG TIGHTENING TORQUE, FOR GUIDANCE ONLY: M12 - 65Nm & M10 - 54Nm



CALIPER BODY THERMO-SENSOR AVAILABLE - CP6282-6 (PT100 TYPE) CP6282-7 (PT1000 TYPE) RETAINING SCREW CP355-188 (M4X6)

CONFIGURATION	CAPS FITTED?	NEW DISC THNESS	MIN WORN DISC THNESS	NEW PAD THNESS	MIN WORN PAD THNESS	NEW STACK NOM	MIN WORN STACK	AVAILABLE WEAR	MAX WEAR ON WORST SIDE
32mm IRON DISC	NO	32	31	25	5	82	41	41	20.5
32mm IRON DISC	YES	32	31	25	5	82	41	41	20.5
35mm CARBON DISC	NO	35	25	25	12	85	49	36	18

B1 INSTALLATION DRAWING

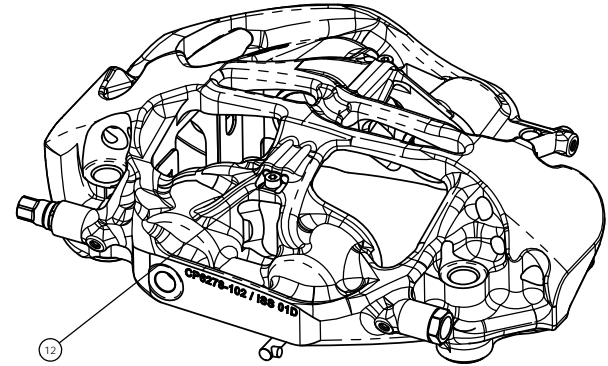
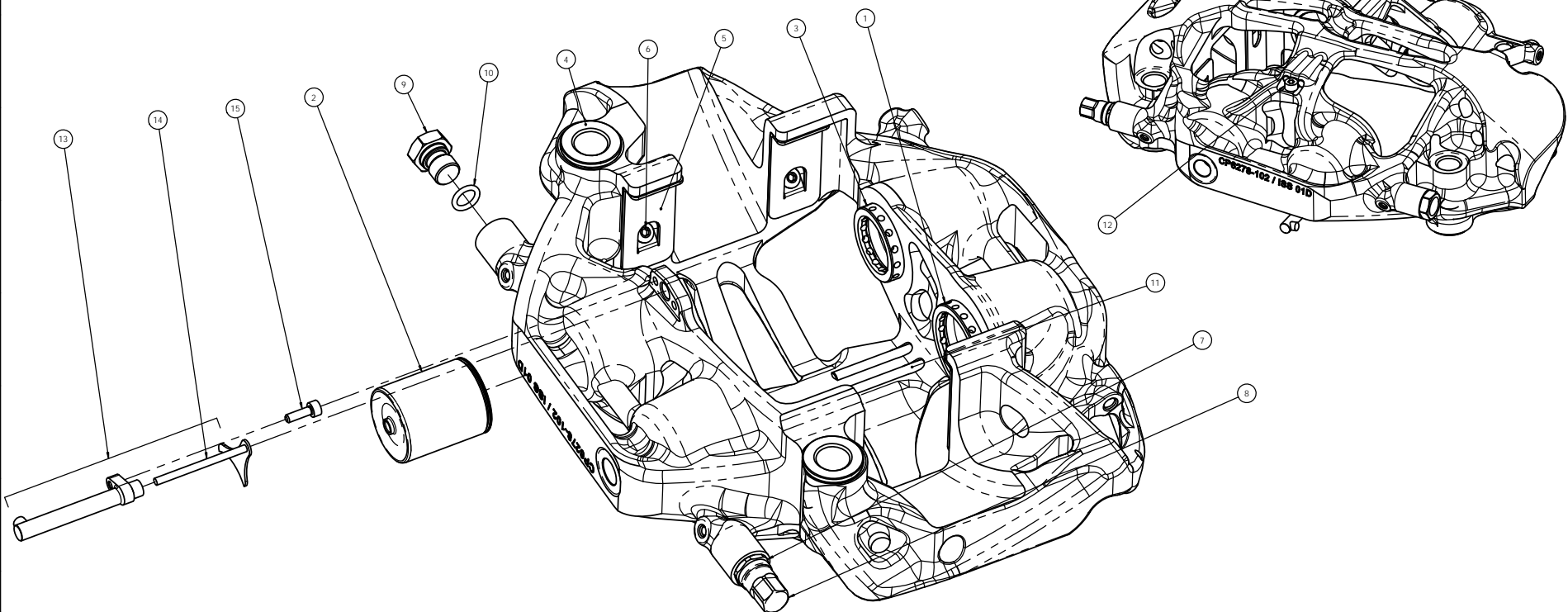
IF THIS DOCUMENT IS PRINTED IN HARDCOPY, IT IS FOR INFORMATION USE ONLY AND THEREFORE IS NOT SUBJECT TO UPDATING CONTROLS. ALWAYS REFER TO SOLIDWORKS VIEWER FOR LATEST ISSUE



THIS DRAWING IS CONFIDENTIAL AND IS SUPPLIED ON THE EXPRESS CONDITION THAT IT SHALL NOT BE LOANED OR COPIED OR DISCLOSED TO ANY OTHER PERSON OR USED FOR ANY OTHER PURPOSE WITHOUT THE WRITTEN CONSENT OF AP RACING LTD.

AP RACING
 AP Racing
 Wheler Road
 Coventry
 CV3 4LB
 Tel: +44 024 7663 9595
 Fax: +44 024 7663 9559
 e-mail: sales@apracings.co.uk
 Web site: HTTP://www.apracings.com
 © AP Racing Ltd. 2005

REF.	PART #	DESCRIPTION	QTY	FITTING NOTES
1	CP6278-105	PISTON Ø36 x 35.26 Ti	2	
2	CP4969-166	PISTON Ø28.6 x 35.26 Ti (SUITS LVDT)	1	
3	CP6278-104	PISTON Ø28.6 x 35.26 Ti	1	
4	CP6278-108	LOWER MTG BUSH (CP6278-2/3*)	2	USE LOCTITE 648 WITH ACTIVATOR.
	CP6277-108	LOWER MTG BUSH (CP6278-4/5*)	2	
5	CP6278-106	PAD ABUTMENT WEAR PLATE	4	APPLY 736 RTV SILICONE SPARINGLY BEHIND THE ABUTMENT PLATE ENSURING ENTIRE CONTACT FACE IS COVERED. APPLY PRESSURE TO ABUTMENT PLATE WHEN FITTING TO ENSURE MINIMUM FILM THICKNESS AND AVOID ANY GAP. ENSURE ABUTMENT PLATE SITS CORRECTLY AGAINST CALIPER BODY BEFORE FITTING RETAINING SCREWS.
6	CP3355-114	BUTTON HEAD SCREW-M4x0.7 6 LONG	4	APPLY A 1-2MM DROP OF LOCTITE 270 TO THE 2nd FROM LAST THREAD WHEN FITTING. TIGHTENING TORQUE - 3.7Nm
7	CP6300-21	BLEED VALVE	1	APPLY LOCTITE 270 TO THREAD UPON ASSEMBLY. TIGHTENING TORQUE 13Nm. CAP TIGHTENING TORQUE IS 4Nm.
8	CP6300-228	BLEED VALVE CAP (SPARES ONLY)	AS REQ'D	
9	CP6300-103	BLEED PORT PLUG	1	APPLY LOCTITE 270 TO THREAD UPON ASSEMBLY. TIGHTENING TORQUE 13Nm.
10	CP3076-128	BLEED PORT PLUG SEAL	1	
11	CP6278-109	PAD ABUTMENT ROD	4	TO REPLACE A WORN OR DAMAGED PAD ABUTMENT ROD, REMOVE M4 SCREW (12) AND DRIVE ROD OUT WITH A PIN PUNCH FROM INSIDE. CLEAN UP HOLE, FIT NEW ROD WITH A SMEAR OF 736 RTV SILICONE & RE-FIT SCREW.
12	CP5166-108	CAP SCREW-M04x0.7 8 LONG	2	APPLY A 1-2MM DROP OF LOCTITE 270 TO THE 2nd FROM LAST THREAD WHEN FITTING.
13	CP4969-504	LVDT ASSY (COMPLETE)	1	
14	CP4969-505	LVDT ROD & YOKE S/ASSY (SPARES ONLY)	AS REQ'D	
15	CP6376-105ST	CAP SCREW-M03x0.5 10 LONG	1	APPLY A 1-2MM DROP OF LOCTITE 270 TO THE 2nd FROM LAST THREAD WHEN FITTING.
	CP4518-DH	SEAL KIT (4 SEALS)	1	REFER TO PUBLICATION REF: P14.290 & P14.220
	CP4100-121	7lb ANTI KNOCK-BACK SPRING (D PISTON)	2	
	CP2667-113	7lb ANTI KNOCK-BACK SPRING (H PISTON)	2	



Issue No	Alterations			Zone	Initials
	Date & No.	Particulars			
1		SEE SHEET 1 FOR ISSUE INFORMATION.			

SCALE 1:1 SHEET 2 OF 2

DRAWN Jon Tait

APPROVED

DERIVED FROM #

TITLE
SPARES

DRG NO. CP6278-1CD